

OFFICE BUILDING FOR LEASE

1720 Wyandotte

Kansas City, Missouri



6,662 Rentable Square Feet

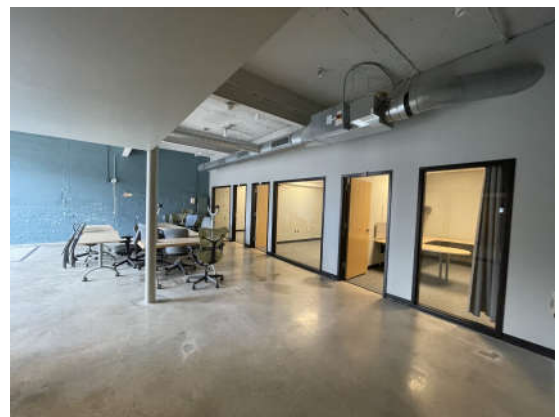
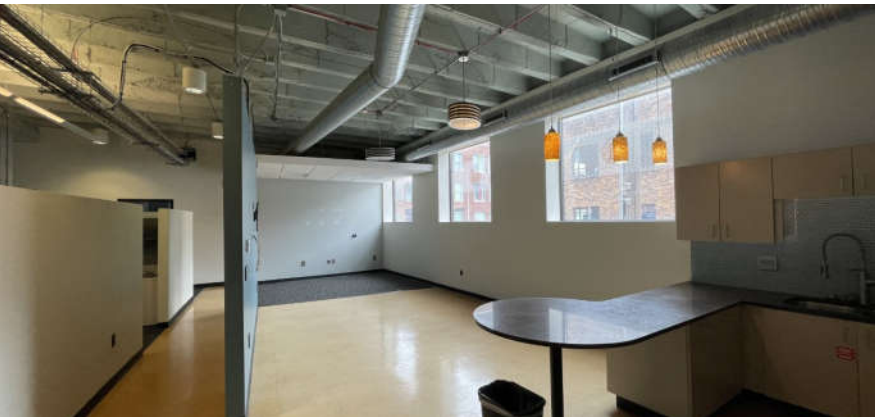
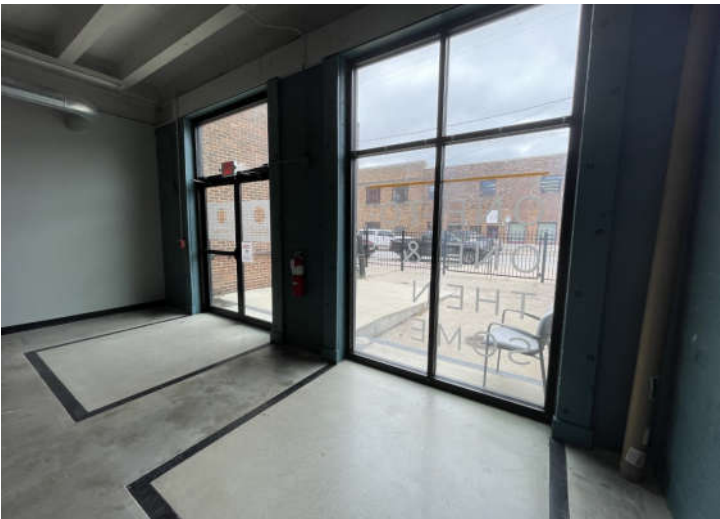
- Premier Crossroads location near Performing Arts Center
- \$23.00 / RSF / Year (\$0.50 / RSF Annual Increase)
- Tenant pays own utilities, interior maintenance, trash removal
- Escalation over Base Year for Landlord's Expenses (Real Estate Taxes / Insurance / Exterior Maintenance / Management)
- Parking available in nearby Webster Garage (120 W. 17th St.)
- Building Signage Available
- Private Offices / Break Area / Conference



Peter T. Lacy, CRE, CCIM
913-236-7000

1720 Wyandotte

Kansas City, Missouri



Information furnished regarding property is from sources deemed reliable, but no warranty or representation is made as to the accuracy thereof and same is submitted subject to errors, omissions, prior sale or lease or withdrawal, without notice.

1720 Wyandotte

Kansas City, Missouri



LOCATION

Located in the heart of the Crossroads Arts District of Kansas City, Missouri, 1720 Wyandotte is just one block from Kauffman Center for the Performing Arts, Bartle Hall, and the new Loews Convention Center Hotel. It is two blocks from the Kansas City Streetcar line that runs between the River Market, Downtown, and Union Station. This location has great access to all parts of the metropolitan area via nearby I-35 and I-70.

Information furnished regarding property is from sources deemed reliable, but no warranty or representation is made as to the accuracy thereof and same is submitted subject to errors, omissions, prior sale or lease or withdrawal, without notice.